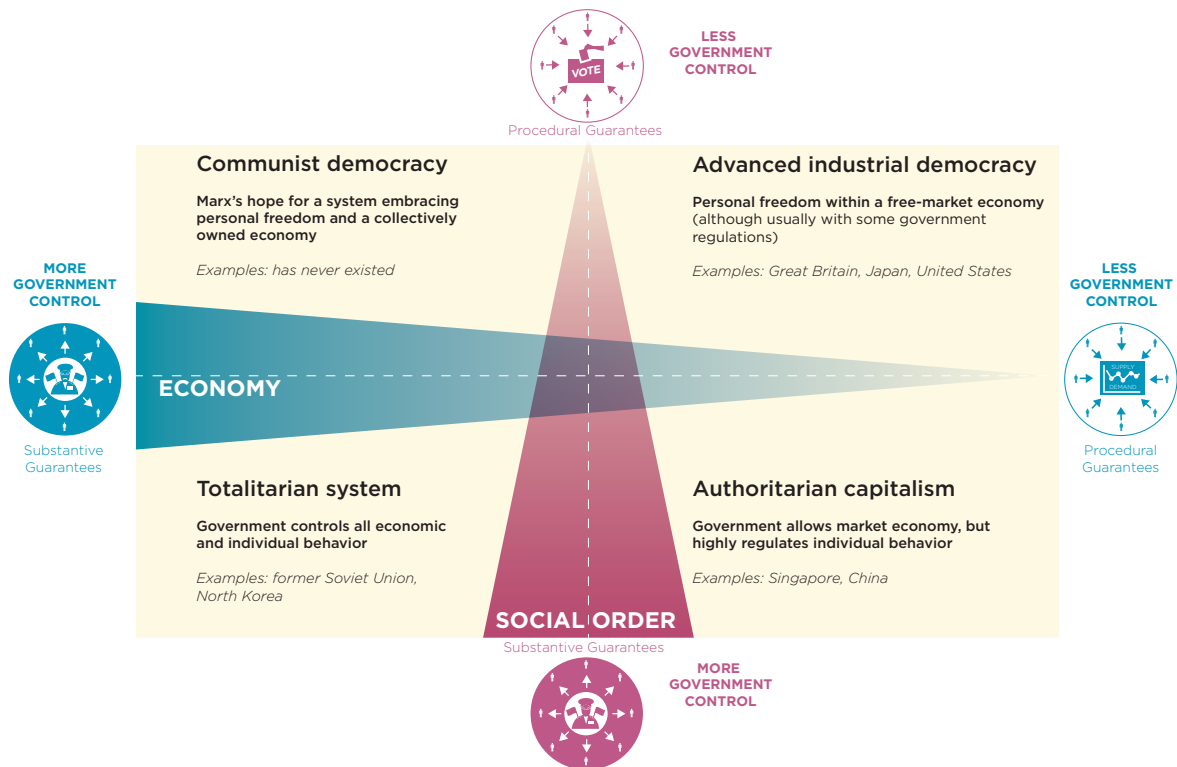


FIGURE 1.3 POLITICAL AND ECONOMIC SYSTEMS



Political systems work in conjunction with economic systems, but government control over the economy does not necessarily translate into tight control over the social order. We have identified four possible combinations of these systems, signified by the labeled points in each quadrant. These points are approximate, however, and some nations cannot be classified so easily. Sweden is an advanced industrial democracy by most measures, for instance, but because of its commitment to substantive economic values, it would be located much closer to the vertical axis.